



Caravan movers with effortless intelligent power

| | Platinum | Titanium | Quickey |
|---------------------------------------|----------|----------|---------|
| Safe Working Load - Single Axle (ATM) | 2250kg | 2250kg | 2250kg |
| Safe Working Load - Twin Axle (ATM) | 2850kg | ✗ | ✗ |
| Weight of unit | 31kg | 29kg | 37kg |
| Removable | ✗ | ✗ | ✓ |
| Auto engage | ✓ | ✗ | ✗ |
| Roller size | 180mm | 130mm | 130mm |
| Auto brake upon release | ✓ | ✓ | ✓ |
| Voltage overload protection | ✓ | ✓ | ✓ |
| Max speed (Meters per minute) | 7.2 | 6.5 | 6 |
| Warranty | 2 Years | 2 Years | 2 Years |
| Dual Axle Price | \$4,370 | ✗ | ✗ |
| Single Axle Price | \$2,300 | \$1,499 | \$1,799 |



Upgrade to safe, push-button maneuvering and hitch mounting

Single Axle requires 2 motors
 Twin Axle requires 4 motors
 Safe maximum working capacity for both:
Single Axle: 2250kg Titanium and QuicKEY
Twin Axle: 2850kg Platinum



Remote Control Caravan and Trailer Movers



© 2024 Purple Line Pty Ltd
 Photographs and diagrams are for illustration purposes only. Actual product may vary and any specifications are subject to change without prior notice. All information correct at time of print.

Purple Line PTY LTD
 13-15 Indian Drive Keysborough
 VIC 3173 AUS
enquiries@purpleline.com.au

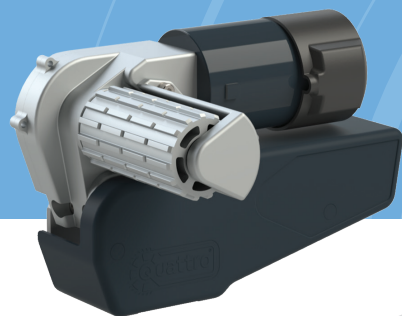


purpleline.com.au
 Tel: 03 9588 2959



Choose a mover that's right for you!

Ideal for caravans, camper trailers, boat trailers, horse floats & custom made and general use trailers up to 2850kg & gradients up to 20%



Quattro Platinum

EGO500

AUTOMATIC
ENGAGE

The caravan mover of choice for large and twin axle Aussie vans, the Quattro Platinum's big 180mm wide rollers drive the wheels of the caravan directly, where 90% of the caravan's weight is located, rather than on the a-frame where only 10% of the van's weight is located. Strong, reliable, and robust – the Quattro Platinum incorporates Quattro technology – the intelligent modular system, featuring soft-start electronics that assures you'll be able to manoeuvre without sudden starts or the need for any manual labour.

- Wind-on auto-engage system
- Max power for moving big vans with ease
- Wider 180mm roller



Quattro Titanium

EGO400

IDEAL FOR
MOST SINGLE
AXLE VANS

Australia's best value caravan mover the Quattro Titanium, has been designed to save weight while using dual-wheel engagement meaning that this manual engagement caravan mover can be fully engaged from either side of the caravan or trailer. Easy to operate, lightweight & powerful, with a simple over-centre cam engager, the strong, soft-start Quattro Titanium is made of alloy construction and incorporates intelligent Quattro technology.

- Quick and easy to engage
- Over-centre cam management
- Wide 130mm roller width



Quattro QuicKEY

EQR130

CAN BE
REMOVED
PRIOR TO
WATER
CROSSINGS

Easily removed or fitted in seconds, the Quattro QuicKEY is the perfect trailer mover solution to keep the weight of your camper trailer or van to a minimum. The Quattro QuicKEY is an ultra-powerful mover that has been designed and engineered to mount to a 'quick release' bracket, meaning you can remove and store it during travel and quickly install it when you return home to assist in storing your caravan or trailer.

- Easily installed or removed when not in use
- Powerful motor and precision gearbox
- Wide 130mm roller

