



MOVING MADE EASY

Purple Line's range of e-go movers make easy work of manoeuvring your caravan – all by yourself

E-GO TITANIUM

The e-go Titanium is Purple Line's entry-level model that combines the top-of-the-range lightweight alloy drive unit with a proven over-centre engagement system.

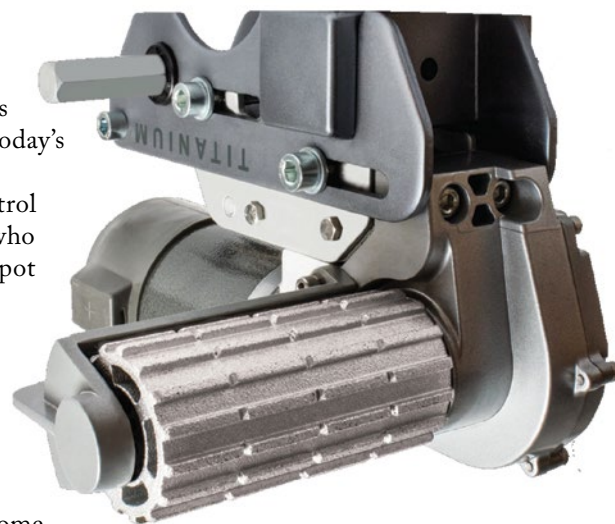
Purple Line Australia director Malcolm Hill said the e-go Titanium set a new benchmark for value and performance in chassis-mounted caravan movers.

"Nothing else offers a top-quality alloy-bodied motor and gearbox at anywhere near its \$1299 price," he said. "Until now, these drive units have been available only on top-end models costing hundreds of dollars more – for a dual-axle caravan the saving can be as

much as \$700.

"The alloy motors also save almost 10kg per pair, which is especially useful on some of today's weight-conscious vans."

Mr Hill said a remote control mover was ideal for anyone who had to park a van in a tight spot anywhere, whether at a park or when putting the van away at home. "Many of our customers buy movers to store their van in a difficult corner at home," he said. "It can make the difference between storing the van at home or paying to store it elsewhere.



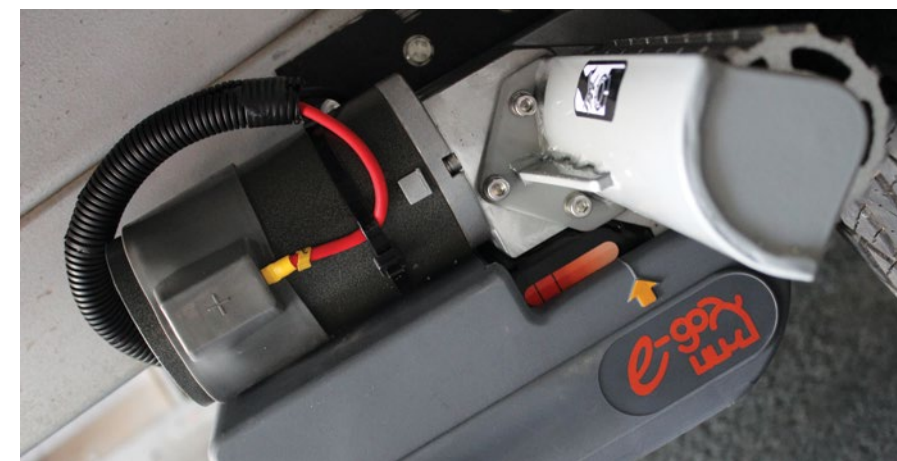
E-GO PLATINUM

The e-go Platinum, has been developed exclusively for Australia to provide maximum manoeuvring power for big, tough Aussie caravans. With upgraded electronics, a wider 200mm tyre roller and a re-engineered engagement mechanism, it is designed to deliver maximum power to the road wheels of the heaviest vans and trailers.

Purple Line Australia director Malcolm Hill said the tough e-go Platinum model ensured the chassis-mounted e-go would remain the mover of choice for big dual-axle vans up to 3.5 tonnes.

"Experienced caravanners already prefer e-go movers when they have a really big, heavy van to move, and the new e-go Platinum takes it a

step further," he said. "It reflects our company's commitment to 'design ... innovate ... improve' by upgrading a



mover that is already respected around Australia for its performance.

"The 200mm rollers and enhanced wind-on engager, with needle roller bearings in a new alloy housing, maximise the roller grip on the tyre, especially on chunky off-road tyres.

"Also, unlike powered jockey wheels, e-go chassis mounted movers drive the wheels that carry most of a van's weight, with obvious traction benefits on gradients and loose surfaces.

"Capping off the e-go Platinum's improved design is enhanced electronic circuitry to optimise synchronisation of four-motor installations on dual axle vans."

Purple Line offers three e-go models, all with the same high-performance, alloy-cased motor and gearbox units and with different engagement mechanisms for different applications. Recommended retail price for a single axle set is \$1299 for e-go Titanium, \$1699 for e-go Platinum and \$1699 for the quick-release e-go Quickey. Installation typically takes around five hours per single axle set, or 10 hours per dual axle set, and Purple Line has a growing network of authorised installers across Australia. ■

CUSTOMER FEEDBACK

"I previously had a 21ft 6in Jayco Sterling caravan and I had Purple Line Movers fitted. Where the caravan is stored at home it has to go with the A-frame in first. After six years we have recently upgraded to a new Jayco Silverline Outback caravan with single slide-out.

I was a little concerned with the weight, exposed aggregate concrete driveway and slope. After numerous conversations with Malcolm and Greg from Purple Line, and Sam from Complete Mobile Caravan Servicing, I decided to install the Platinum Movers onto the Silverline.

At home I have an exposed aggregate concrete driveway with a slight slope and the road also has an uphill incline. When hooking the caravan up, I park my LandCruiser on the road and use the movers to push the caravan out onto the road and then onto the car.

Yes, by myself and no arguments.

I picked up the new caravan yesterday after Sam had finished fitting the movers. When I got home and had to put the caravan in the carport, the Platinum Movers worked great. So easy and, again, by myself.

Thank you to Malcolm and Greg from Purple Line for such great service. Also to Sam from Complete Mobile Caravan Servicing, your workmanship and professionalism are outstanding. Your attention to detail with the install was above and beyond. I would have no problem in recommending both the Platinum Movers and Sam to anybody thinking about installing movers onto their caravan.

The Platinum Movers are awesome."

Lex

CONTACT

Visit www.purpleline.com.au or call (03) 9588 2959 to learn more about Purple Line's products and to find the dealer nearest you